



API COLLABORATIVE POWER ENGINEERING CENTRES OF EXCELLENCE

GUIDELINES FOR ACCESS TO EDUCATIONAL PORTAL

After receiving your login details complete the following steps:

Step 1:

There are two ways to access the resources:

1. Go to the API website: www.api.edu.au and follow the link to Collaborative Power Engineering Centres of Excellence/Access to Resources and Terms of Use. Go to the QUT BlackBoard site.
2. Go directly to the QUT Home page (www.qut.edu.au) and follow the link to QUT Blackboard (<http://blackboard.qut.edu.au/>) from the Quick Links. This will take you to the QUT Login page.

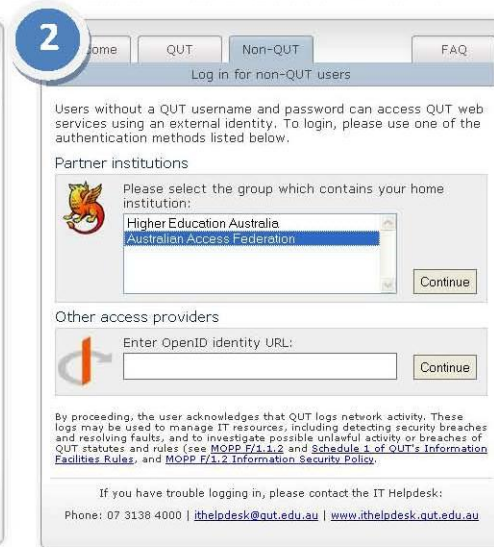
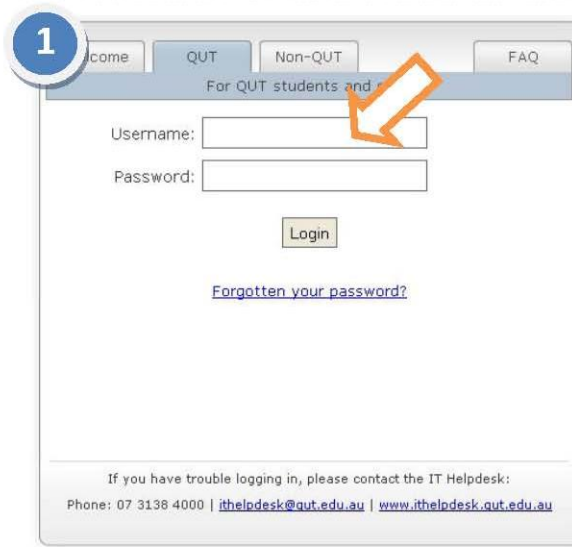
The screenshot shows the QUT website homepage. At the top left is the QUT logo and name: 'Queensland University of Technology Brisbane Australia'. To the right is the tagline 'a university for the real world'. Below the header is a navigation bar with 'QUT Home', 'Contact Us', 'Staff Directory', 'A-Z Index', and a search box. The main content area is divided into several sections:

- About QUT:** Links include 'The university', 'Life in Brisbane', 'Campuses and Maps', 'Services & support', 'Policy', 'Learning & teaching', 'For staff', 'Faculties, Institutes & divisions', and 'Precincts'.
- Study:** Links include 'Courses', 'Careers', 'Admission & enrolment', 'Fees & scholarships', 'Calendars', 'For current students', 'For future students', and 'For international students'.
- Research:** Links include 'Areas of expertise', 'Institutes & centres', 'Industry collaboration', and 'For researchers'.
- Community:** Links include 'Community, business and government', 'International engagement', 'Alumni', 'Giving to QUT', 'Reconciliation', 'Conferences & seminars', and 'Professional development'.

At the bottom of the page is a 'Quicklinks' section with a grid of links: 'QUT Virtual', 'QUT Blackboard', 'Assignment Monitor', 'Studyfinder', 'Email', 'Library', 'Student services', 'Jobs at QUT', 'IT Helpdesk', and 'Computer announcements'. An orange arrow points to the 'QUT Blackboard' link.

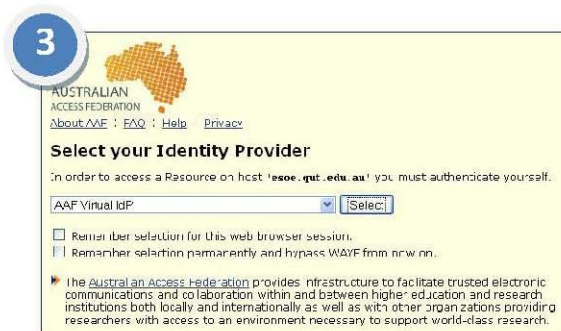
Step 2:

Going to QUT BlackBoard will open up the QUT Login page. Complete the following sub-steps:



1) Select **Non-QUT** tab, then Australian Access Federation (AAF) - Continue.

2) Choose the AAF Virtual IdP from the drop down list.



3) Go through the AAF IdP stuff accepting everything – each Uni will have their own accept rules/policies.



4) After you complete the AAF Virtual Home Login - You will get back to QUT Login eventually.

Step 3:

Accept the Terms of Use and Confirm. You may need to scroll down.

Step 4:

Accept the release of attributes to QUT. Agree and Confirm. You should then be able to access content within BlackBoard – Go to tab called API BlackBoard Home.

1

Welcome QUT Non-QUT FAQ

Accept attribute release policy

What attributes have been released to QUT?
The following details have been provided to QUT. Please ensure you wish to release these details then click continue below:
You are about to release the following information as part of using services provided by this site:

Name	Values
uid	qut-godat@vho.aaf.edu.au
sn	Godat
givenName	Meredith
mail	m.godat@qut.edu.au
esoe-externalised-identity	true
esoe-delegator	shibboleth

If you have trouble logging in, please contact the IT Helpdesk:
Phone: 07 3138 4000 | ithelpdesk@qut.edu.au | www.ithelpdesk.qut.edu.au

2

AAF

About AAF : FAQ : Help : Privacy

This is the Digital ID Card to be sent to 'https://esee.qut.edu.au':

AAF Digital ID Card	
Surname	surname
email	email@domain.edu.au
eduPersonPrincipalName	qut-surname

Don't show me this page again. I agree that my Digital ID Card (possibly including more than shown above) will be sent automatically in the future.

Cancel Confirm